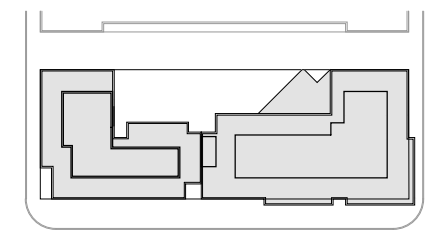



400 Florida Avenue | Washington DC
 South West View

October 7, 2016 | A201

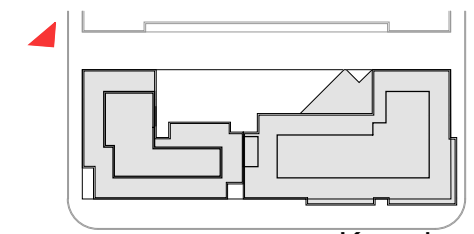


Key plan 



400 Florida Avenue | Washington DC
South East View

October 7, 2016 | A202



Key plan

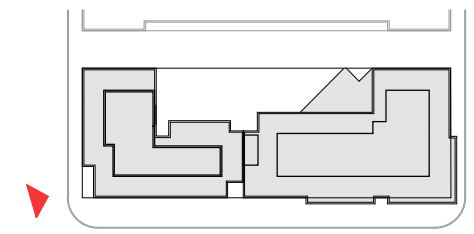


400 Florida Avenue | Washington DC

October 7, 2016 | A203



Street View

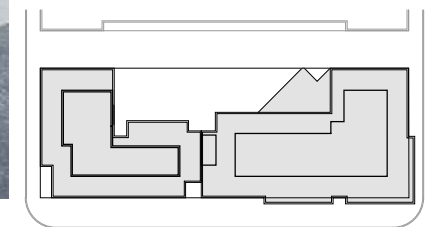


Key plan



400 Florida Avenue | Washington DC

October 7, 2016 | A204



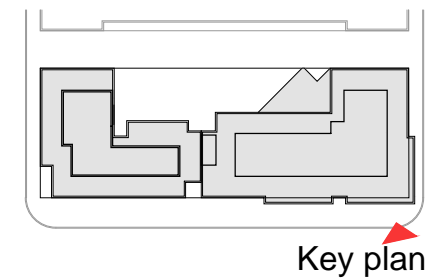
Key plan



400 Florida Avenue | Washington DC

Street View

October 7, 2016 | A205



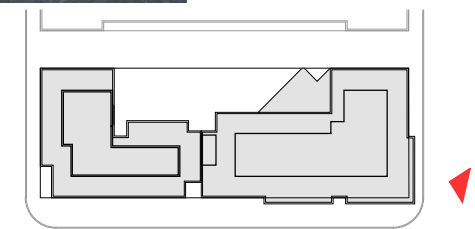
Key plan



400 Florida Avenue | Washington DC

Street View

October 7, 2016 | A206



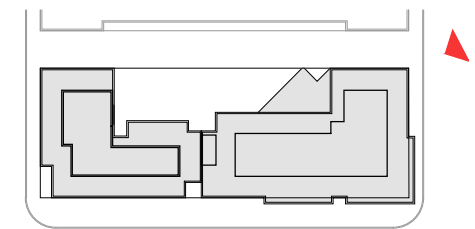
Key plan



400 Florida Avenue | Washington DC

Street View

October 7, 2016 | A207



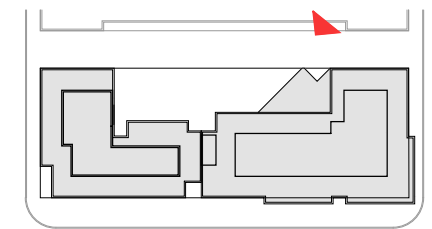
Key plan



400 Florida Avenue | Washington DC

Street View

October 7, 2016 | A208

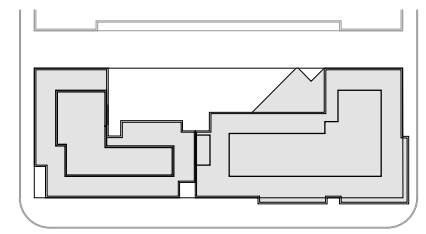


Key plan



400 Florida Avenue | Washington DC

October 7, 2016 | A209



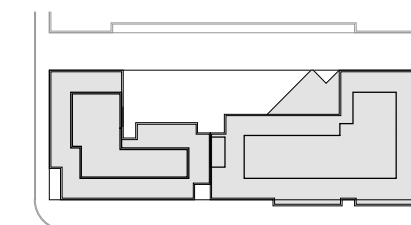
Key plan



400 Florida Avenue | Washington DC

Aerial SE

October 7, 2016 | A210



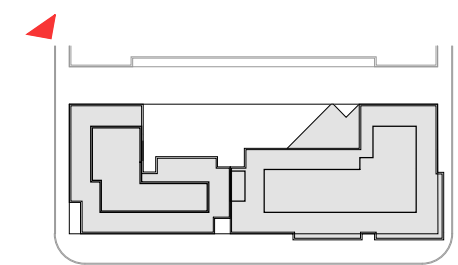
Key plan



400 Florida Avenue | Washington DC

Aerial SW

October 7, 2016 | A211



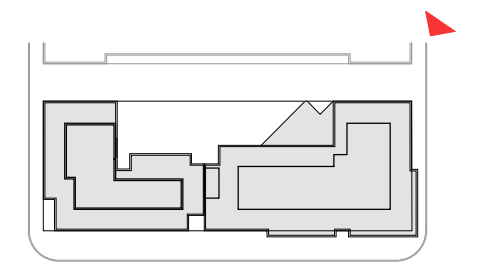
Key plan



400 Florida Avenue | Washington DC

Aerial NW

October 7, 2016 | A212



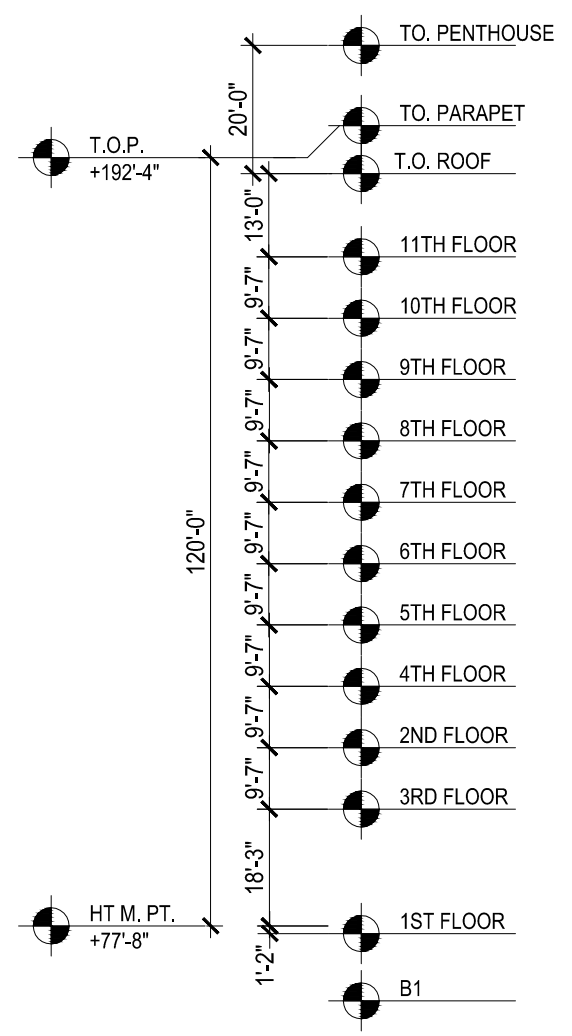
Key plan



400 Florida Avenue | Washington DC

Aerial NE

October 7, 2016 | A213



Alternative east residential elevation

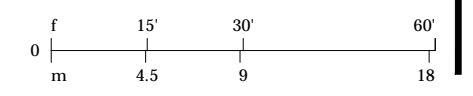


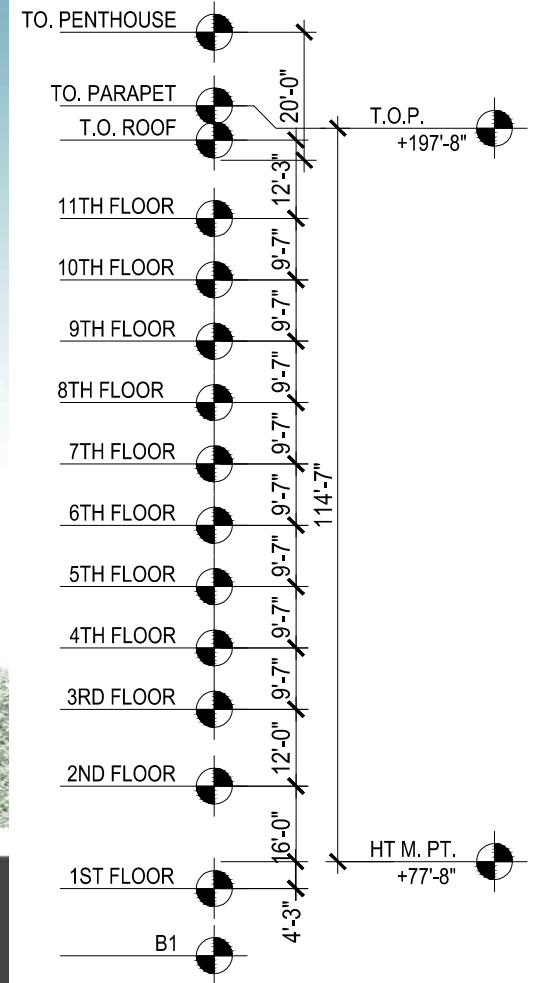
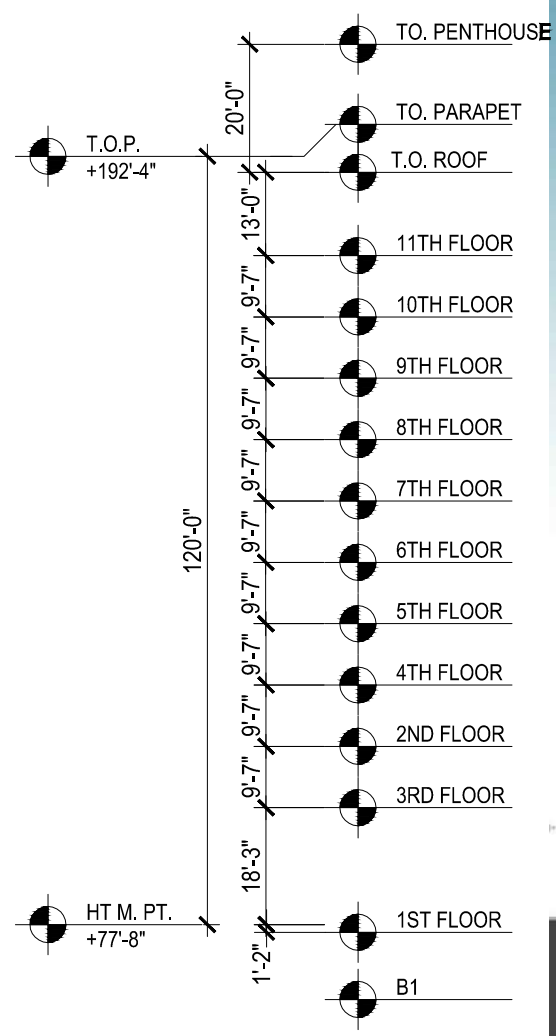
400 Florida Avenue | Washington DC

October 7, 2016 | A222-A



Alternative east Elevation





RESIDENTIAL | HOTEL
← | →

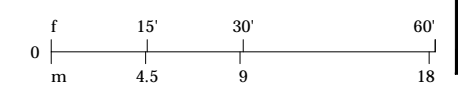


400 Florida Avenue | Washington DC

October 7, 2016 | A223



North Elevation





HOTEL LOGGIA



HOTEL RESIDENTIAL
← →

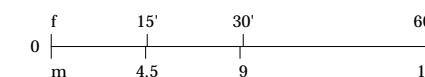


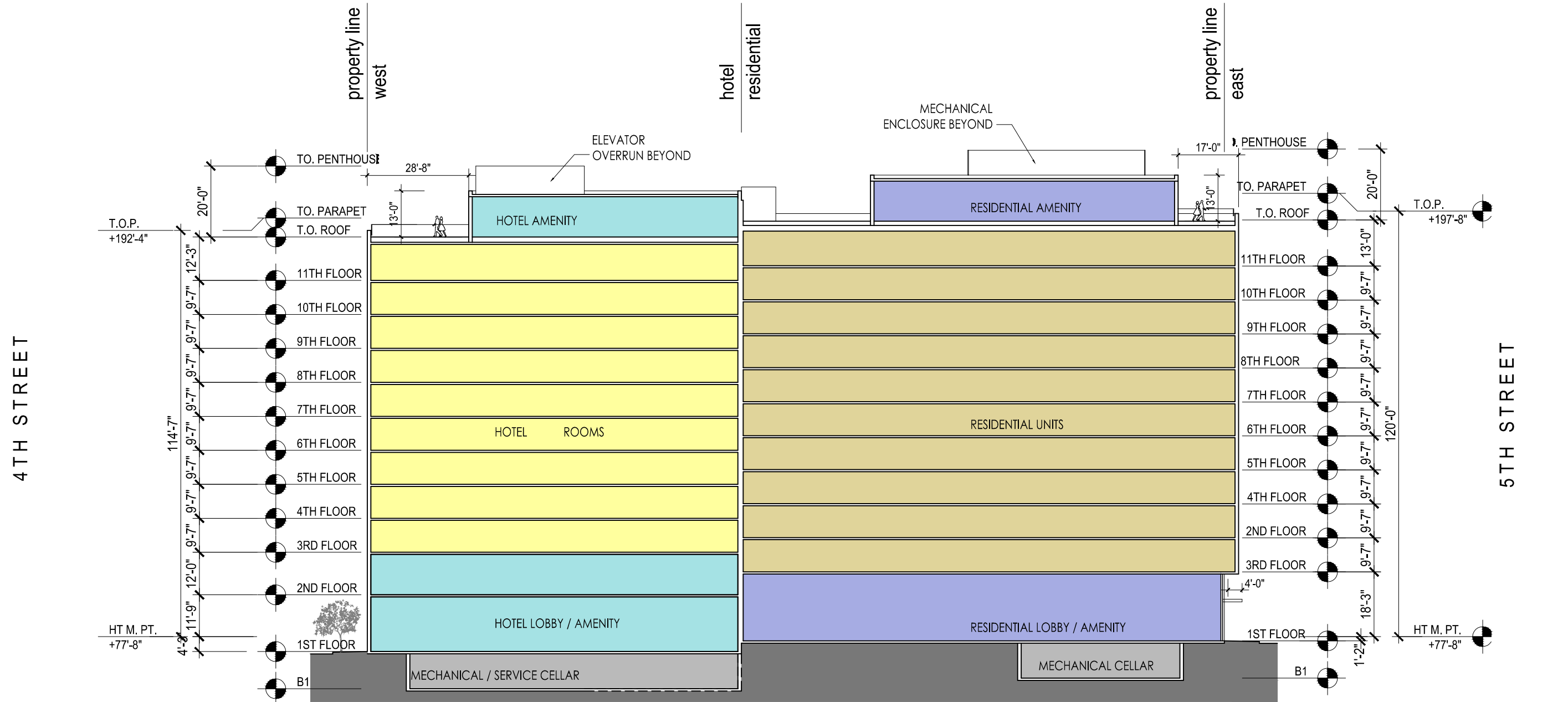
400 Florida Avenue | Washington DC

October 7, 2016 | A224

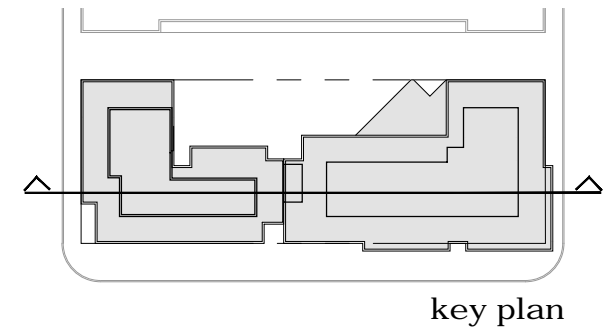


Elevation Details





- Residential Amenity
- Hotel Amenity
- Vegetation / Green Roof
- Service / Circulation
- Residential Units
- Hotel Rooms

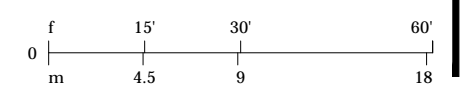


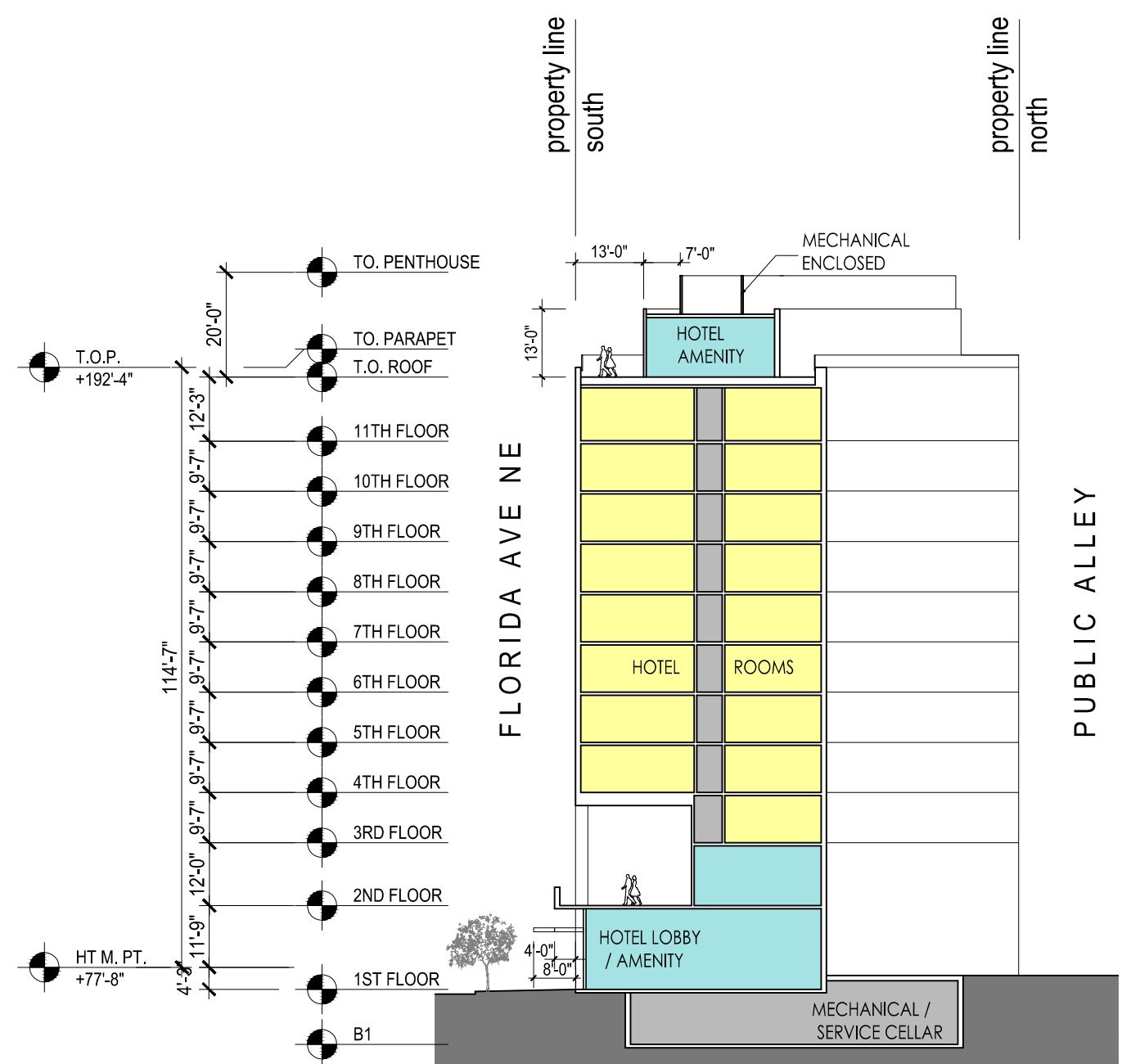
400 Florida Avenue | Washington DC

October 7, 2016 | A301

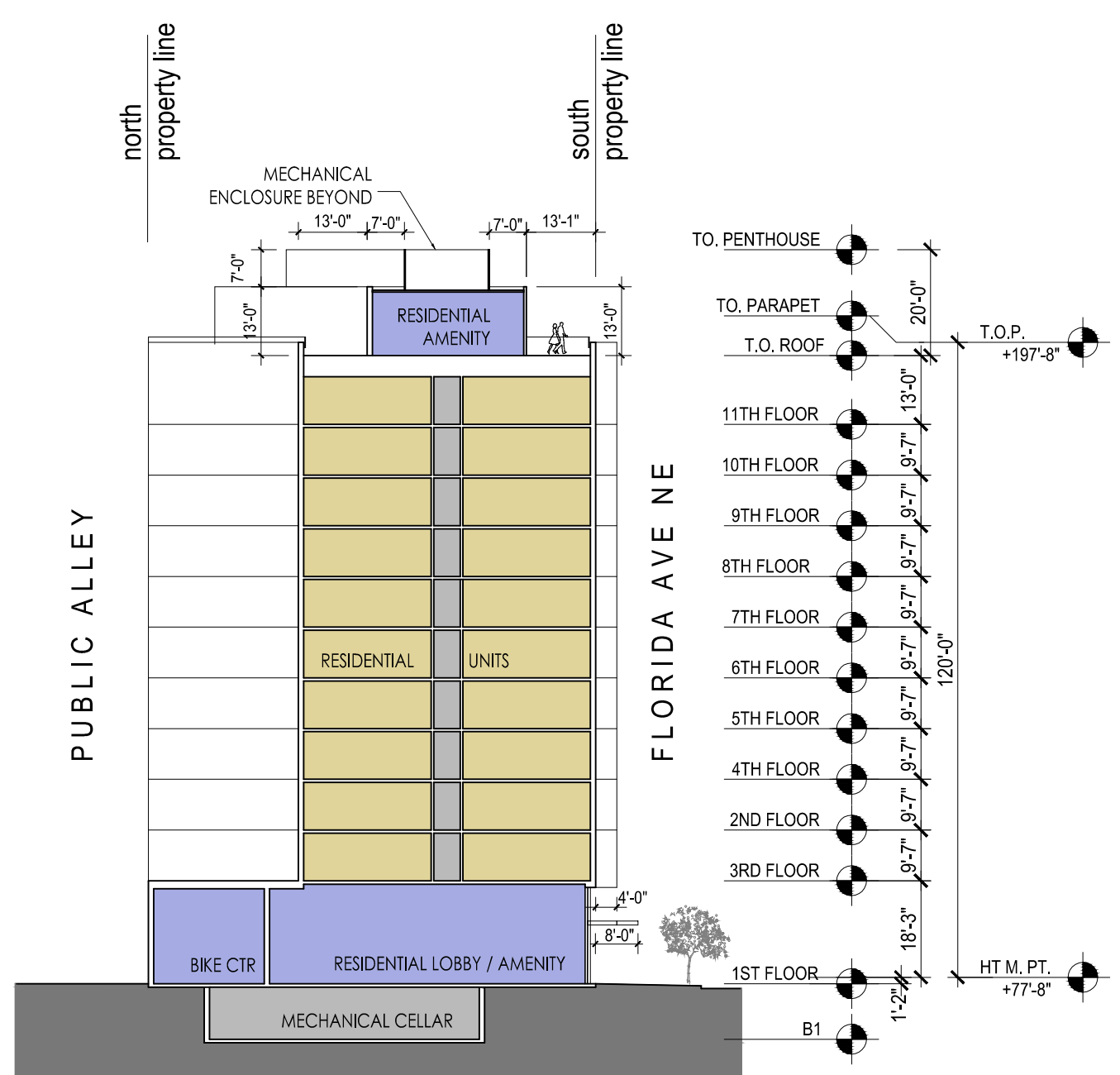


Building Sections



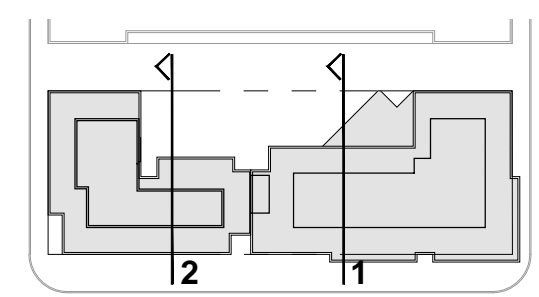


section 2 - hotel



section 1 - residential

- Residential Amenity
- Hotel Amenity
- Vegetation / Green Roof
- Service / Circulation
- Residential Units
- Hotel Rooms



key plan

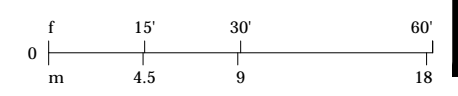


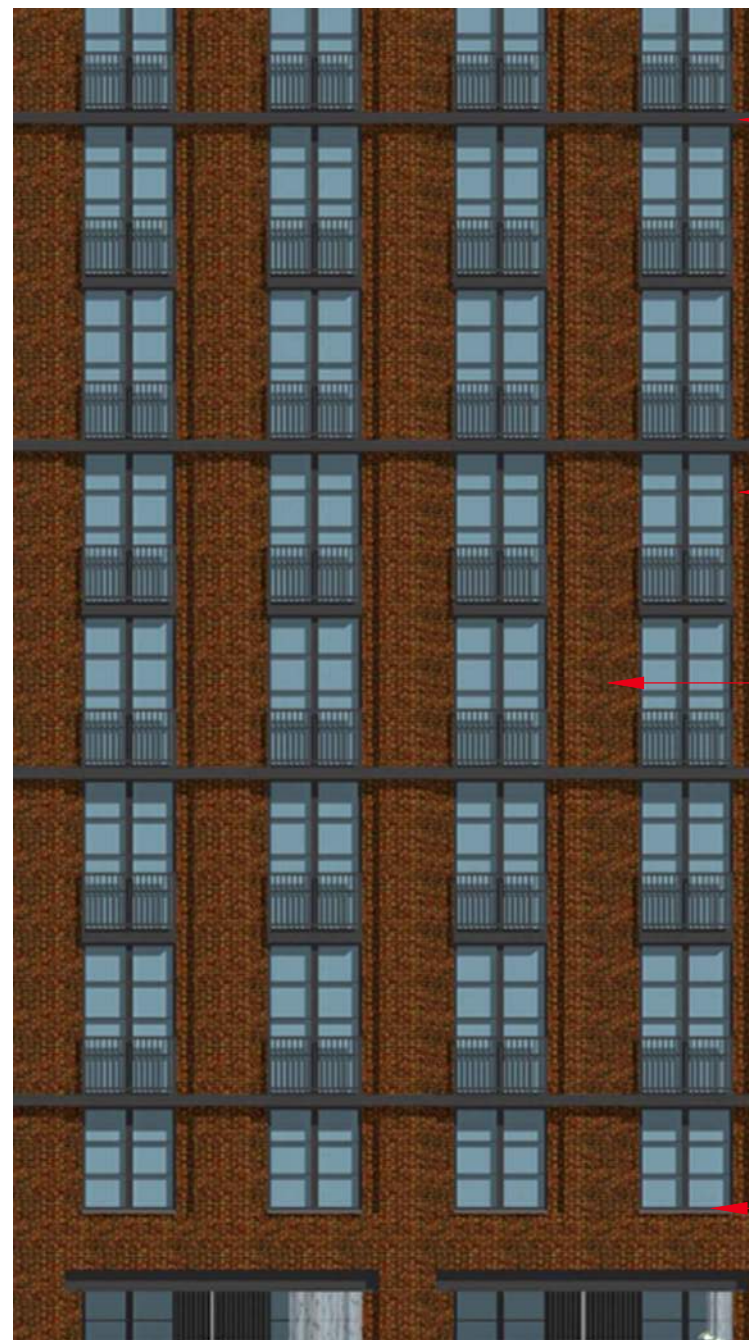
400 Florida Avenue | Washington DC

October 7, 2016 | A302



Building Sections

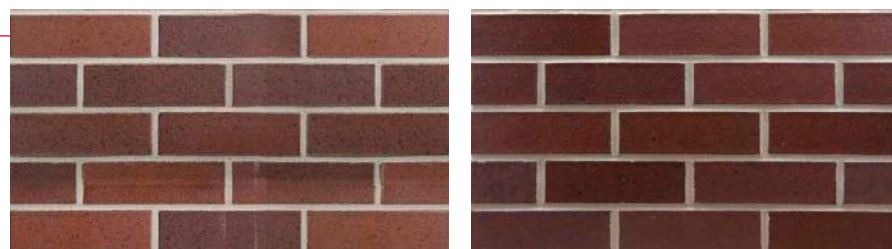




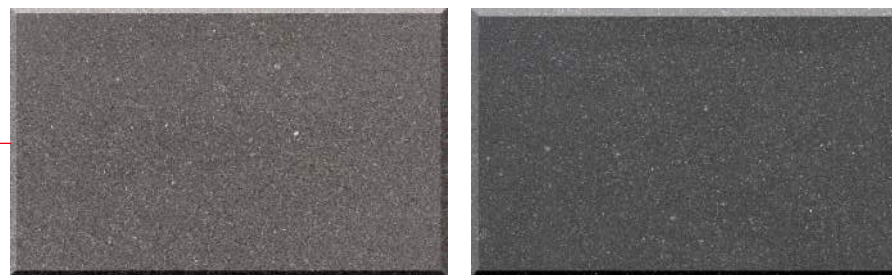
Metal Trim color range



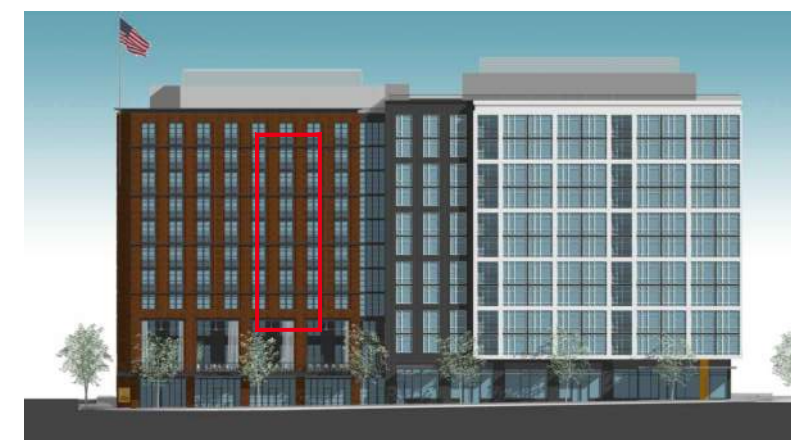
Window Mullions color range



Brick color range



Cast Stone color range



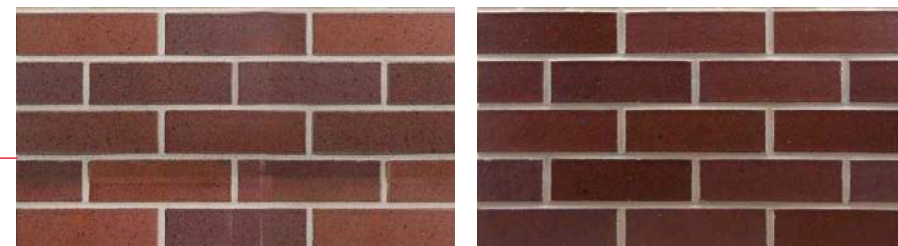
south elevation



400 Florida Avenue | Washington DC

Exterior Materials Hotel

October 7, 2016 | A401



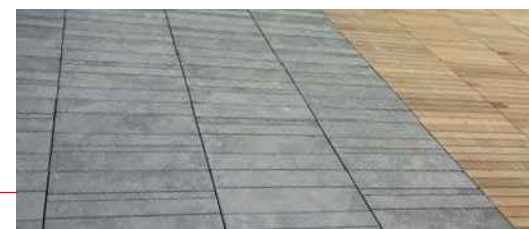
Brick color range



Corrugated Metal panel color range



Stucco color range



Pavers



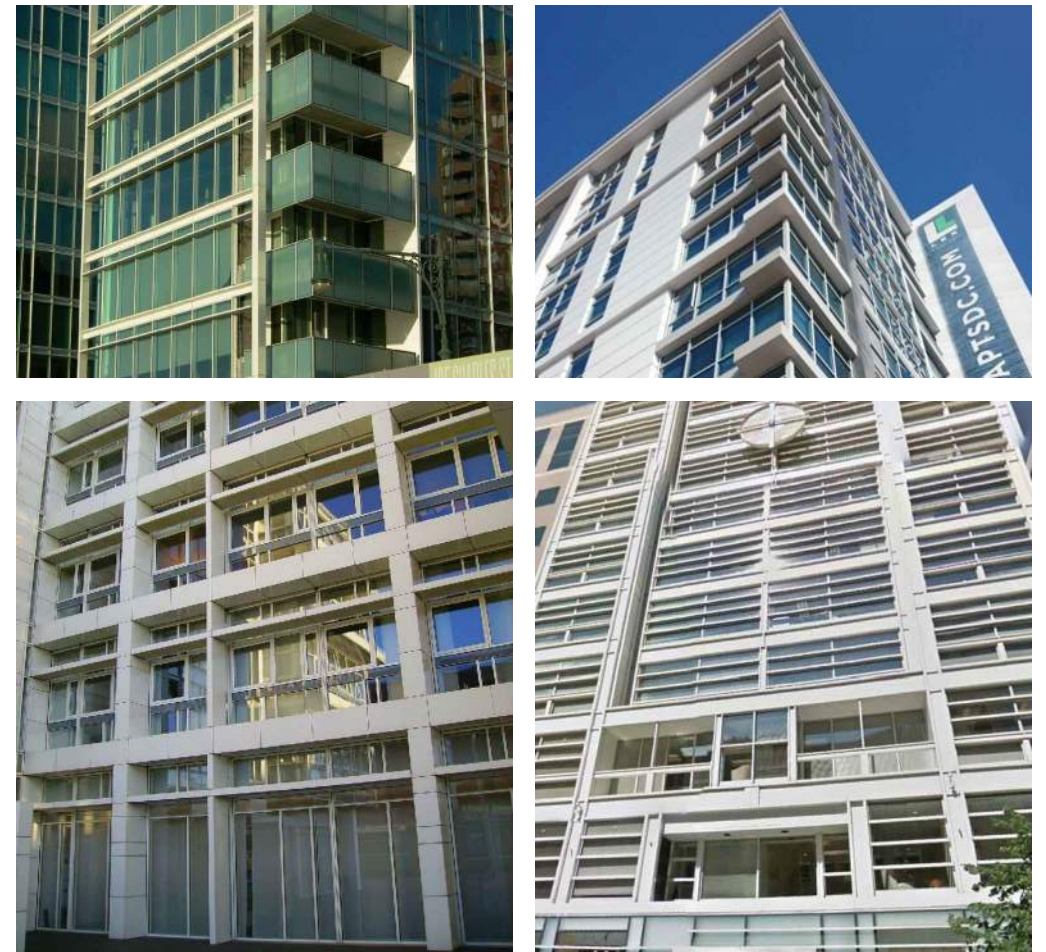
Corrugated Metal Panels installation example



Loggia Perspective



Metal Panels installation examples



Composite Metal Panel color range



Window Mullion color range



Brick color range



Trim / Storefront Mullion color range



south elevation



400 Florida Avenue | Washington DC

Exterior Materials Residential

October 7, 2016 | A403





Brick Frieze detail location



Brick Frieze detail location



Existing Frieze

Frieze installation examples





Yale Apartments DC



77 H street DC



Rosewood Hotel DC



Capital Self-Storage site DC



400 Florida Avenue | Washington DC

October 7, 2016 | A405



Wythe Hotel NY



Ludlow Hotel NY

Front St / Dover St NY



Amsterdam



400 Florida Avenue | Washington DC

October 7, 2016 | A406

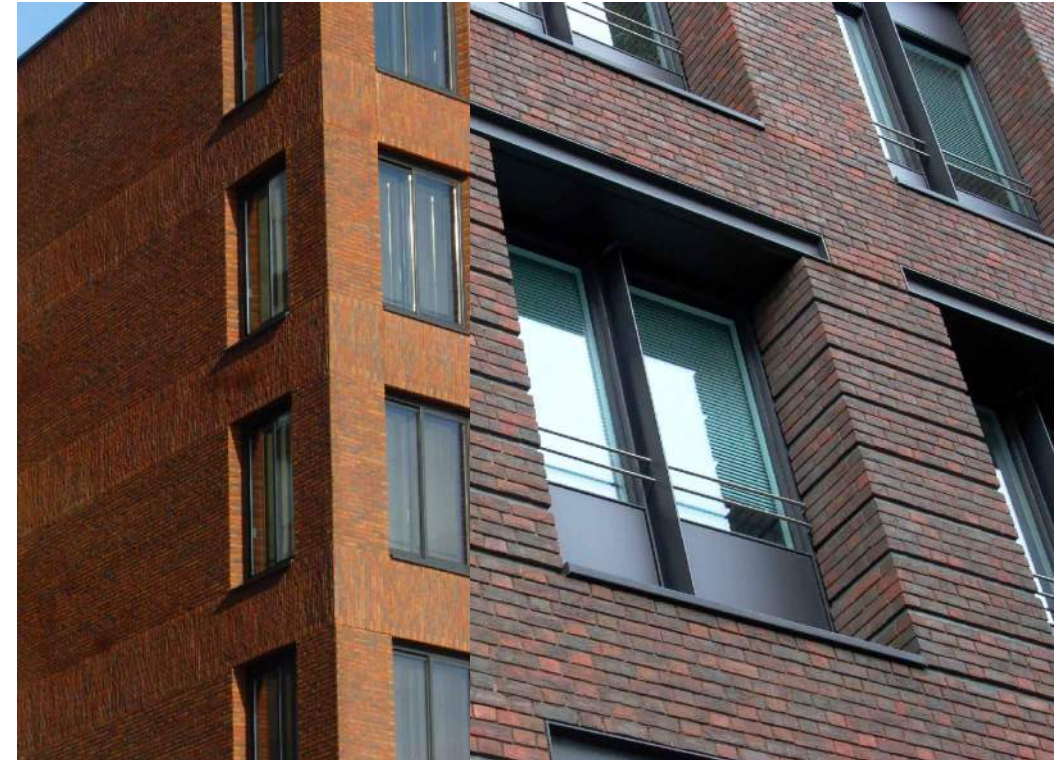


fenestration



loggia

brick details



Ludlow Hotel NY



400 Florida Avenue | Washington DC

October 7, 2016 | A407